

Frequently Asked Questions

What are systemic enzymes?

When enzymes are introduced into the bloodstream, they work "systemically," or throughout the entire body. Systemic enzymes are similar to digestive enzymes, though certain enzymes are better designed for systemic activity as opposed to digestion due to the materials to which they react. Neprinol's systemic enzyme blend is highly efficient at supporting normal levels of a particular circulatory protein known as fibrin.

Why Neprinol?

As we age, our natural enzyme production decreases while the need for these enzymes increases. Supplementing with certain valuable enzymes can combat enzyme deficiencies that lead to a wide variety of health concerns. Healthy levels of these enzymes can assist the body in maintaining a healthy immune system, healthy joints, proper circulation and normal recovery (due to overexertion from exercise).*

Is Neprinol safe?

No serious or adverse side effects have been reported from taking systemic enzymes such as Neprinol.* If you are taking blood-thinning medication, please consult with your physician before taking Neprinol.

Is Neprinol Kosher?

Neprinol is certified Kosher (Star-K) and a copy of the certification is available by request.

Is Neprinol Vegetarian?

This formula is vegetarian in accordance with the guidelines of the American Vegetarian Association.

Is Neprinol Non-GMO?

The microorganisms used to produce this enzyme product are not genetically engineered organisms as defined by the National Organic Standards Board.

Ingredients

Serrapeptase - A proteolytic (protein-digesting) enzyme with potent fibrinolytic activity which may support healthy fibrin concentrations.*

Nattokinase - A fibrinolytic enzyme that can help to maintain normal blood viscosity and normal cardiovascular health.*

Lipase - Converts fat into fatty acids which may be expressed or retained as energy.*

Protease - Supports normal circulatory health and immune function.*

Amla - A potent antioxidant that has the highest concentration of any naturally derived vitamin C.*

Papain - Promotes normal healing of bruises and other tissue injuries (due to over-exertion from exercise).*

Bromelain - A proteolytic (protein-digesting) enzyme from pineapple with potent fibrinolytic activity which may support healthy fibrin concentrations.* Supports a normal comfortable recovery after surgery.

Rutin - Flavonoid that supports strong capillaries, connective tissue, and healthy blood vessels.

CoQ10 - Decreases the proliferation of free radicals, supports a healthy immune system, and is an essential ingredient for enzymes to function in the body.*

Magnesium - Promotes a healthy cardiovascular system, and reduces the effects of increased stress.*

Supplement Facts

Serving Size: 2 Capsules

	Amount Per Serving	%Daily Value
Magnesium (as citrate)	16 mg	4%
Proprietary Blend Neprinol AFD		
Systemic Enzyme Blend: Serrapeptase, Nattokinase, Lipase	30,000 FU	†
Protease Blend: Protease (derived from <i>Serratia</i> , <i>B. subtilis</i> and <i>A. oryzae</i>)		†
Enzyme and Cofactor Blend: Amla Extract (fruit), Papain, Bromelain, Rutin, Coenzyme Q10		†
† Daily Value Not Established		

OTHER INGREDIENTS: Cellulose (Acid Armor™ capsules)

Neprinol is free of dairy, gluten, and soy allergens. Contains no artificial colors or preservatives.

KEEP OUT OF REACH OF CHILDREN. STORE IN A COOL DRY PLACE WITH LID TIGHTLY CLOSED.

SUGGESTED USE: Take Neprinol with 8 oz of water on an empty stomach, or as directed by your healthcare practitioner. Larger daily doses may be divided into 3-4 servings per day.*

MAINTENANCE: 2-3 Capsules per day.*

INCREASED SUPPORT: 4-6 Capsules per day.*

THERAPEUTIC: Up to 9 Capsules per day.*

WARNING: Do not take this product without the consent of your physician if you are currently taking anti-coagulants or if you are pregnant or nursing.



Neprinol utilizes phthalate-free Acid Armor capsules which have enteric properties that protect the enzymes from stomach acid without the use of chemicals and plastics commonly found in traditional enteric coatings.*



For more information about **Neprinol**
please visit www.arthurandrew.com
or call (800) 448-5015

ARTHUR ANDREW

M E D I C A L

**NEPRINOL AFD IS AVAILABLE IN
90, 150 & 300 CAPSULE BOTTLES**

***THESE STATEMENTS HAVE NOT BEEN EVALUATED BY THE FOOD AND DRUG ADMINISTRATION. THIS PRODUCT IS NOT INTENDED TO DIAGNOSE, TREAT, CURE OR PREVENT ANY DISEASE.**

[f /ArthurAndrewMedical](https://www.facebook.com/ArthurAndrewMedical) [t /arthurandrewmed](https://www.instagram.com/arthurandrewmed)

Neprinol AFD®





Neprinol AFD® (Advanced Fibrin Defense) is a systemic enzyme blend containing a proprietary combination of serrapeptase, nattokinase, and additional enzymes and cofactors.

This unique blend of all-natural enzymes and antioxidants helps to support the body's normal blood cleansing process. Neprinol works throughout the body to assist in keeping the heart, joints, brain, and other organs functioning normally while maintaining healthy circulation and immune function.*

Many major causative factors of degrading health originate in the digestive system and can radiate outwards, impacting the circulatory system. As we age, we produce far less of the digestive enzymes needed to maintain normal health. The gradual breakdown of the intestinal lining coupled with hindered digestion can allow contaminants to enter the bloodstream. If enzyme levels are too low, these contaminants accumulate over time, whereas adequate enzyme levels are inherently able to cleanse this debris from the blood.*

Neprinol is a blend of all-natural enzymes that supports the body's normal blood cleansing ability as well as assists in restoring blood to its naturally pure state, supporting normal cardiovascular and immune health.*



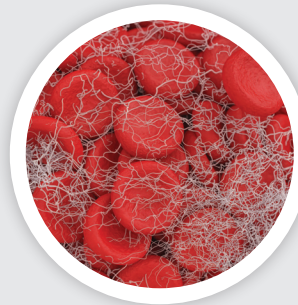
Healthy Immune and Joint Function*

Healthy circulation is a vital component of the healing process and the maintenance of a healthy inflammatory response (due to overexertion).* For many people, this is felt as normal joint mobility, comfort, and range of motion.* With advancing age, healthy joint mobility and comfort become exceedingly more important to enjoy a high quality of life, and clinical research has shown that bromelain, rutin, and other systemic enzymes and cofactors support a normal inflammatory response (due to overexertion) for people concerned about the health and flexibility of their joints.*



What is Fibrin?

Fibrin is a protein formed in the human body that can significantly impact our health and general well-being. It is a major component of the healing and blood clotting processes. Healthy adults maintain normal fibrin equilibrium, where blood does not become too thick or thin.



Neprinol contains a blend of fibrinolytic (fibrin-degrading) enzymes that can support healthy fibrin levels in the body. When healthy, our bodies contain sufficient levels of fibrinolytic enzymes to keep our blood clean and flowing freely. The body's enzyme supply is responsible for removing unnecessary accumulated proteins, specifically, fibrin. Neprinol supports normal amounts of fibrinolytic enzymes in the body which maintain normal and healthy fibrin levels.

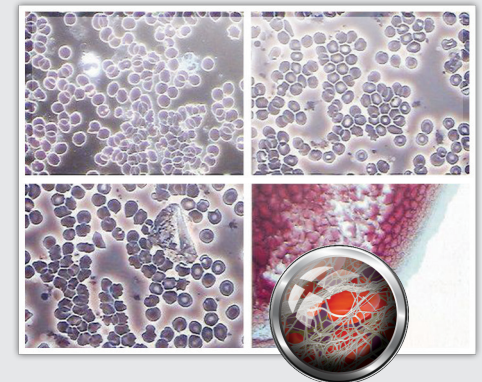
Circulating Immune Complexes (CICs)

The immune system is the body's biological system that protects itself from disease. One of the ways the immune system protects the body is by producing proteins called antibodies which are formed in response to antigens. Antigens are anything foreign to the body and can be bacteria, a virus, or even certain foods. Antibodies can deactivate antigens, but when doing so, they create circulating immune complexes (CICs) in the bloodstream.

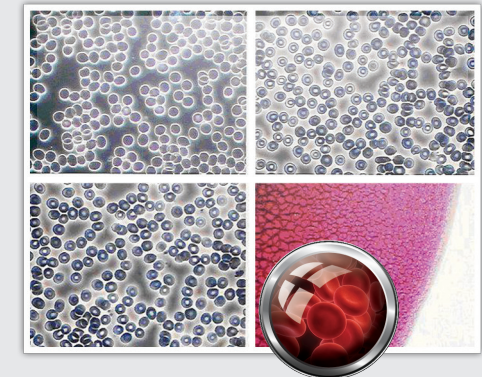
CICs are proteins that the body can break down with its innate proteolytic enzymes. However, due to the aging process and a lack of natural enzymes, CICs can begin to accumulate and trigger uncomfortable symptoms associated with aging. Neprinol may help support the body's natural enzymes in order to maintain a healthy CIC elimination process.*

Neprinol in Use

Participant blood (PICTURED) demonstrates how Neprinol supports the body's ability to support normal levels of CICs, Oxidation, and Endogenous Blood Particles (EBPs). These blood slides were taken using dark-field and conventional microscopy from a 45-year-old male construction worker who complains of daily stiff and uncomfortable joints. After several weeks of Neprinol use, normal joint function was restored.*



(ABOVE) Blood slide before the use of Neprinol.* Subject complains of severe muscle tenderness and stiff and uncomfortable joints.* Subject's blood slide shows high levels of EBPs, CICs, as well as significant oxidative stress; common findings in people with low levels of fibrinolytic enzymes.*



(ABOVE) Blood slide after the use of Neprinol.* Analysis shows normal levels of EBPs, CICs and slight to normal oxidative stress; common findings in healthy aging adults.* Subject has virtually no joint discomfort or tenderness.* No additional supplements were taken during this time.