



Candida Bundle



Reduce, Replenish, Rebalance
Candida, Fungal Overgrowth, Biofilm



Candida Bundle

Candida is naturally occurring as part of the normal microflora in the mouth, gastrointestinal tract, vaginal tissue and skin. Under healthy conditions, candida aids in digestion, nutrient absorption, and detoxification.

Candidiasis (overgrowth) occurs when candida shifts from a beneficial form to a symptom-causing pathogenic form. Once this shift happens, symptoms can occur throughout the entire body including:

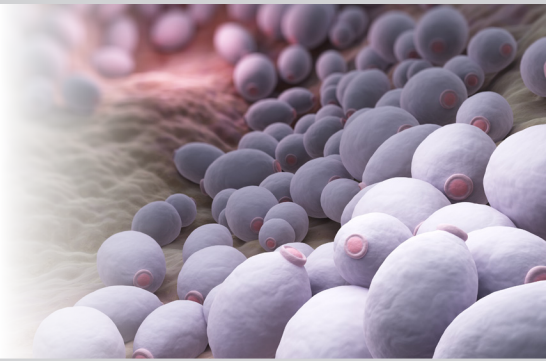
- ▶ Gas, bloating, leaky gut
- ▶ Autonomic nervous system disturbances
- ▶ Yeast infections, itching, and UTIs
- ▶ Nail fungus
- ▶ Sugar cravings & fruit intolerance
- ▶ Athlete's foot and jock itch
- ▶ Fatigue and brain fog
- ▶ Bladder infections
- ▶ GI disturbances (diarrhea, constipation)
- ▶ Skin rashes
- ▶ Allergies, hives, itchy ears
- ▶ Depressed moods

Healthy Candida Principles

Reduce Candida and Biofilm

Replenish Intestinal Flora

Rebalance pH (acid-base) levels



For candida to remain in the beneficial forms, a healthy gut with balanced intestinal flora and a strong immune system are needed. Overgrowth begins when the intestine and healthy flora becomes altered (through a diet of refined carbs, sugars, high protein intake, and alcohol consumption); high stress lifestyle; increase heavy metal load; acid-base imbalance; antibiotic and antifungal medication; oral contraceptive and steroid use; and decreased immune defense.

A natural biological approach uses principles of reduce, replenish and rebalance to support a healthy digestive tract with balanced intestinal flora, proper digestion and a strong immune system. Rebalancing the environment of the body will naturally keep candida levels controlled in the beneficial form and result in a reduction of symptoms.

Candida's ability to create biofilm around itself is a survival technique. Biofilm helps protect candida from external factors including the body's immune response, and natural and prescription anti-fungal medicines.

Biofilm complicates the ability of the body to 'rid' of candida overgrowth. However, mucolytic enzymes (*Serrapeptase*) break down the biofilm barrier, and allow the body's immune system and natural therapies to access candida and shift it back to the beneficial form.



Candida Bundle directions for use

REMEDY	PHASE/DOSE	MON	TUES	WED	THURS	FRI	SAT	SUN
Pleo Alb drops	7 drops in morning	✓	✓	✓	✓	✓	✓	✓
Probiotic 7-in-1	1 capsule with meals	✓✓✓	✓✓✓	✓✓✓	✓✓✓	✓✓✓	✓✓✓	✓✓✓
Basictab	3 tabs with warm water on an empty stomach (30 minutes before or 2 hours after a meal).	✓✓	✓✓	✓✓	✓✓	✓✓	✓✓	✓✓
Serrapeptase	1 capsule on an empty stomach (30 minutes before or 2 hours after a meal)	✓	✓	✓	✓	✓	✓	✓

✓ = 1 dose per day • ✓✓ = 2 doses per day • ✓✓✓ = 3 doses per day

Note: Pleo Alb and Probiotic 7-in-1 can be taken at the same time. Basictab should be taken separately, with warm water on an empty stomach. Serrapeptase should be taken separately on an empty stomach.

For Optimal Results: Your health care practitioner can assess symptoms to determine optimal length of treatment (8 weeks 2 kits). It is recommended to follow a gut healing diet.

Medicinal ingredients: For ingredient and risk information, see box or individual product labels. Consult a health care practitioner before beginning this type of program.

Testimonial

//

After a nutritional assessment, many of my clients are showing signs of candida. I recommend the CandFix Kit + Serrapeptase, which clears the gut of overgrowth and has good absorption. My clients call it a miracle, as their gas and bloating and sugar cravings all go away along with many other symptoms.

I give 2 CandFix Kits back to back, with the clients who only take one coming back a month later to take the second one. They feel rejuvenated afterwards.

//

~ Audrey Sinclair, RHN. Surrey, BC

This Candida Bundle is based on a unique biological approach to break up biofilm and support the reduction and rebalance of candida overgrowth. The goal is to shift candida back into the beneficial form and resolve associated candida symptoms.



This kit contains a selection of natural remedies manufactured by Sanum Kehlbeck, Germany.

Proteolytic and
Mucolytic Enzymes

Biomed International Products Corp.

Only sold through health care professionals.



BIOMED.

Quality. Excellence. Beyond Medicine.

102 - 3738 North Fraser Way, Burnaby, B.C. V5J 5G7 | 1-800-665-8308 | biomedicine.com